

CL-900i Test Menu

Thyroid

FT3
FT4
T3
T4
TSH
Anti-TG
Anti-TPO
Tg
rT3
TRAB*

Infectious Disease

HIV Combo
HBsAg
Anti-HBs
HBeAg
Anti-HBe
Anti-HBc
Anti-HCV
Anti-TP (Syphilis)
HBeAg quantitative*
Anti-HBc IgM*

Fertility

Total β -HCG
FSH
LH
Prolactin
E2
E3
TESTO
PROG
Free testosterone*
17-OH PROG*
SHBG*
AMH*

Tumor marker

CEA
AFP
CA125
CA15-3
CA19-9
FPSA
TPSA
NSE
CYFRA 21-1
CA72-4
PG I
PG II
SCCA
HE4
ProGRP
CA50
CA242

Bone

Metabolic
Intact PTH
Calcitonin
Vitamin D total

Cardiac

CK-MB
Myoglobin
Troponin I
BNP

Diabetes

Insulin
C-peptide

Adrenal Function

DHEA-S
Cortisol
ACTH

Liver Fibrosis

LN
HA
PIIINP
CIV

ToRCH

Toxo IgG*
Toxo IgM*
Rubella IgG*
Rubella IgM*
CMV IgG*
CMV IgM*
HSV-1/2 IgG*
HSV-1/2 IgM*
HSV-1 IgG*
HSV-2 IgG*

Anemia

Ferritin
Vitamin B12
Folate
RBC Folate

Hypertension

Angiotension I*
Angiotension II*
Renin*
Aldosterone*

Growth Hormone

hGH*
IGF-1*

Inflammation

PCT

DS' Screening

PAPP-A*
Free β -HCG*

*: in development

CL-900i Technical Specifications

General Information

Throughput Up to 180 tests/hour
Measurement Principle Micron superparamagnetic particles platform
With alkaline phosphatase (ALP) labeled reagents
And AMPPD substrate

Sample Assembly

Sample Feeder Continuous sample loading and offloading
Sample positions 50
Sample Probe Steel probe, liquid level detection, clot detection,
Horizontal and vertical collision protection
Sample Volume 10~200ul, with increment of 1ul
Sample Dilution Automatic dilution with 1:2~1:40

Reagent Assembly

Reagent Disk 15 reagent positions, continuous loading,
real-time mixing for magnetic particles
Cooling System 2~8 °C
Reagent Pack 50 tests/pack, 100 tests/pack
Reagent Scanning Built-in/External bar code reader
Reagent Probe Steel probe, liquid level detection, clot detection,
Horizontal and vertical collision protection
Reagent Volume 10~200ul, with increment of 1ul

Substrate System

Substrate Bottle 300/500 tests per bottle, bottom piercing
Substrate Loading Capable of continuous loading during testing
Substrate Heating Constant heating
Aspiration Volume 200ul

Magnetic separation unit

Separation Assembly 3-phase magnetic separation
Temperature Accuracy: 37±0.3 °C

Measurement and Reaction System

Detection Mode Photon counting
Signal Detector Photomultiplier (PMT) photo counter
PMT Calibration LED reference module
Incubation positions 82
Temperature Accuracy: 37±0.3 °C
Mixing Unit Non-touch vortexer mixing

Cuvette Loading and Waste Collection

Cuvette Disposable plastic cuvette
Cuvette Loading 88 cuvettes per tray,
2 trays can be loaded in one batch,
continuous loading and offloading
Waste collection Waste container, 200 cuvettes per box

Working conditions

Power Supply 100-240V~50/60Hz
Input Power 500VA
Operating Temperature 15~30 °C
Relative Humidity 35%RH~85%RH, without condensation
Dimension 860mm*740mm*560mm (W*D*H)
Weight 132Kg
Altitude Height -400m~3000m (70kpa)




CL-900i Chemiluminescence Immunoassay System

The right size for your lab

avantorsciences™
delivered by **VWR™** VWR.COM

Avantor Performance Materials India Limited
17th Floor, Building No. 5, Tower C, DLF Cyber City, Phase - III, Gurgaon - 122002, Haryana
Tel: +91 124 4656700 email: csdiagnostics@avantorsciences.com

Marketed by:
Abaxis Healthcare India Pvt. Ltd.
Peringavu, Thrissur, Kerala-680008, Phone: +91 487 2323537
mail: info@abaxishealthcare.com www.abaxishealthcare.com


abaxis healthcare

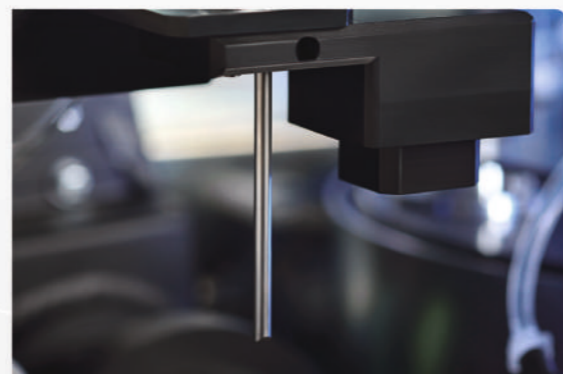


One of the world's smallest,
fully automated CLIA analyzers

CL-900i The right size for your lab



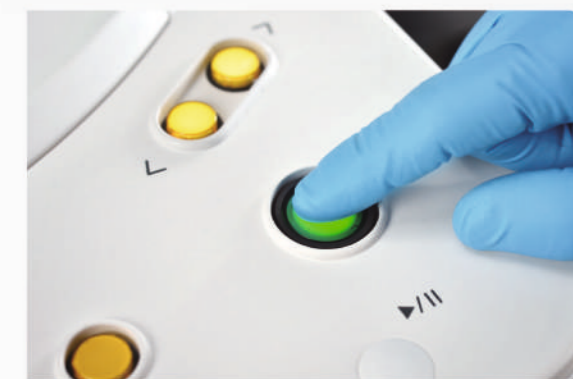
Precise magnetic separation with consistent performance reliability



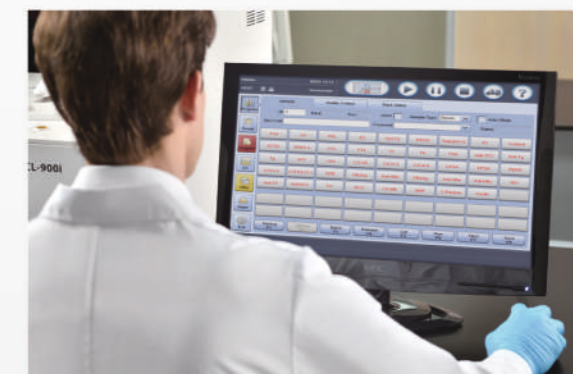
Solid-liquid waste separation
Environmental friendly



Wiper washing technology
Enhance efficiency and minimize carryover



One-key start
Extremely easy to use



Intuitive software interface
Easy access to all functions



Continuously loading of reagents and consumables



User maintenance free
Lighten the workload



Intelligent consumables management